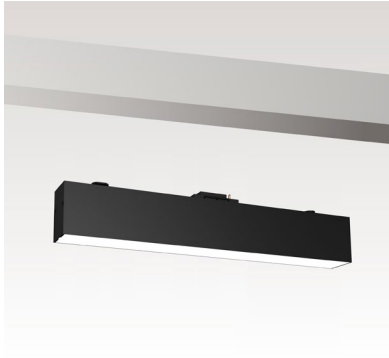


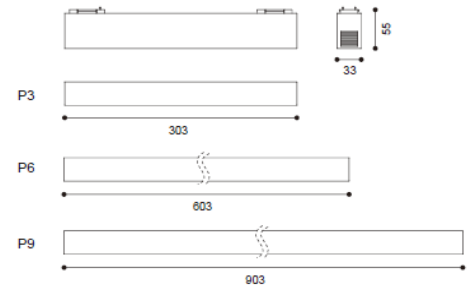
## SLIMDUET-P



## Product specification

## INTERIOR SYSTEM LIGHT

Installation	system light
Cut out	-
Dimension	55x33mm L:303/603/903mm



MUST INSTALLED ON SLIMDUET TRACKS

## Technical description

Article number	1817.410A-V	1817.410B-V	1817.410C-V
LED Consumption	9.2W	18.4W	27.5W
Current	-		
CCT	3000K	3000K	3000K
Lumen <sup>*1</sup>	472lm	1197lm	1428lm
Øsystem <sup>*3</sup>	-	-	-
Voltage	24vdc		
Reflector	115°		
CRI	80+		
Driver	-		

## Technical character

Insulation	CLASS I
Protection	IP 20
Tilt	-
Rotate	-
Operating temperature	-20~40 °C
Average Failure Time	L70(6k) >36000 (h)

## Materials

Luminaire	aluminum extruded
	PC
Reflector	-
Heat sink	-
Color available	white / black

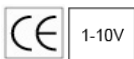
## Package

inner box	mm 1 kg
outer box	mm 0 kg / 0 in 1

## Accessories

None

## Remarks



\*1. LUMEN : for LED chip test result based on Tc=85°C.

This is the ideal (Maximum) lumen. This lumen information is from the LED supplier

\*3. LUMEN(Øsystem) (Total FLUX) : this lumen is from luminaire with heat sink, reflector and fixture,  
this is the real lumen with the loss because of different design of reflectors and fixtures.

## Photometric

1817.410A(115°)    1817.410B(115°)    1817.410C(115°)

